

Protecting Cultural Resources on a Restoration Project and Adjacent Public Lands

Grady H. Caulk, RPA
U.S. Army Corps of Engineers,
Jacksonville, FL, USA



BUILDING STRONG®

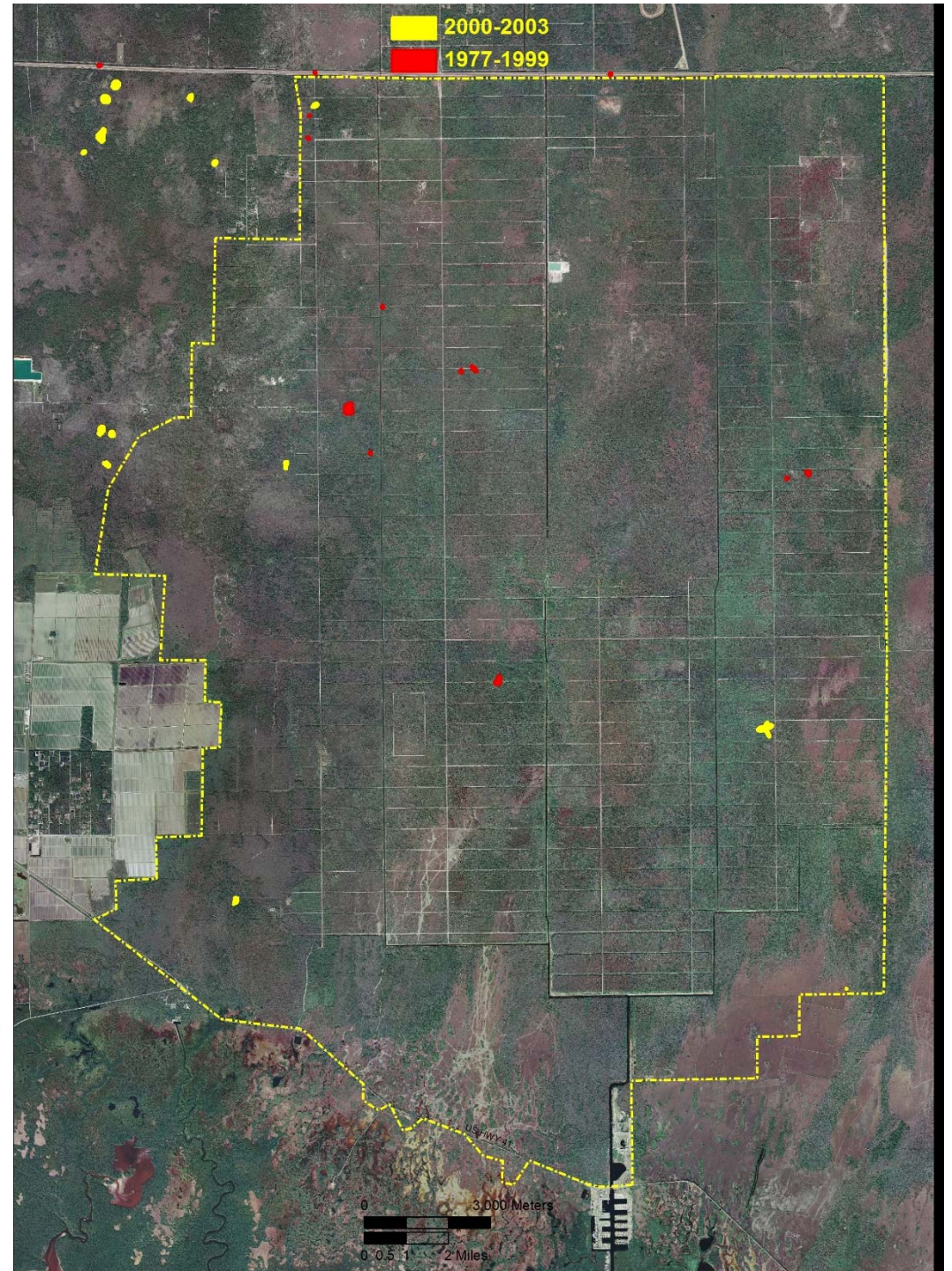
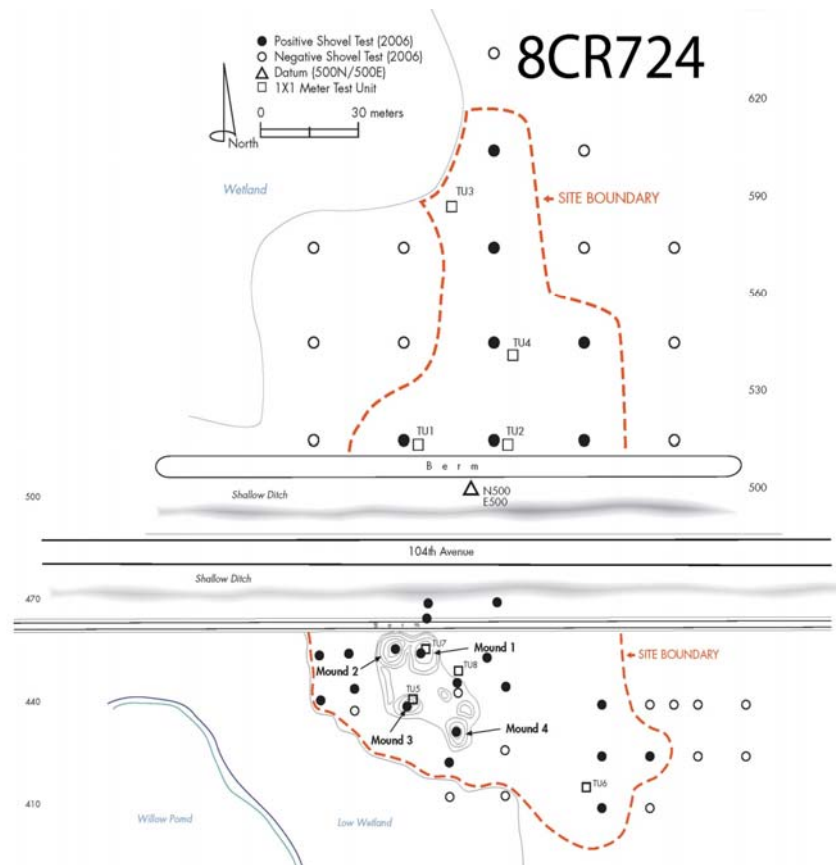
US ARMY CORPS OF ENGINEERS | Jacksonville District



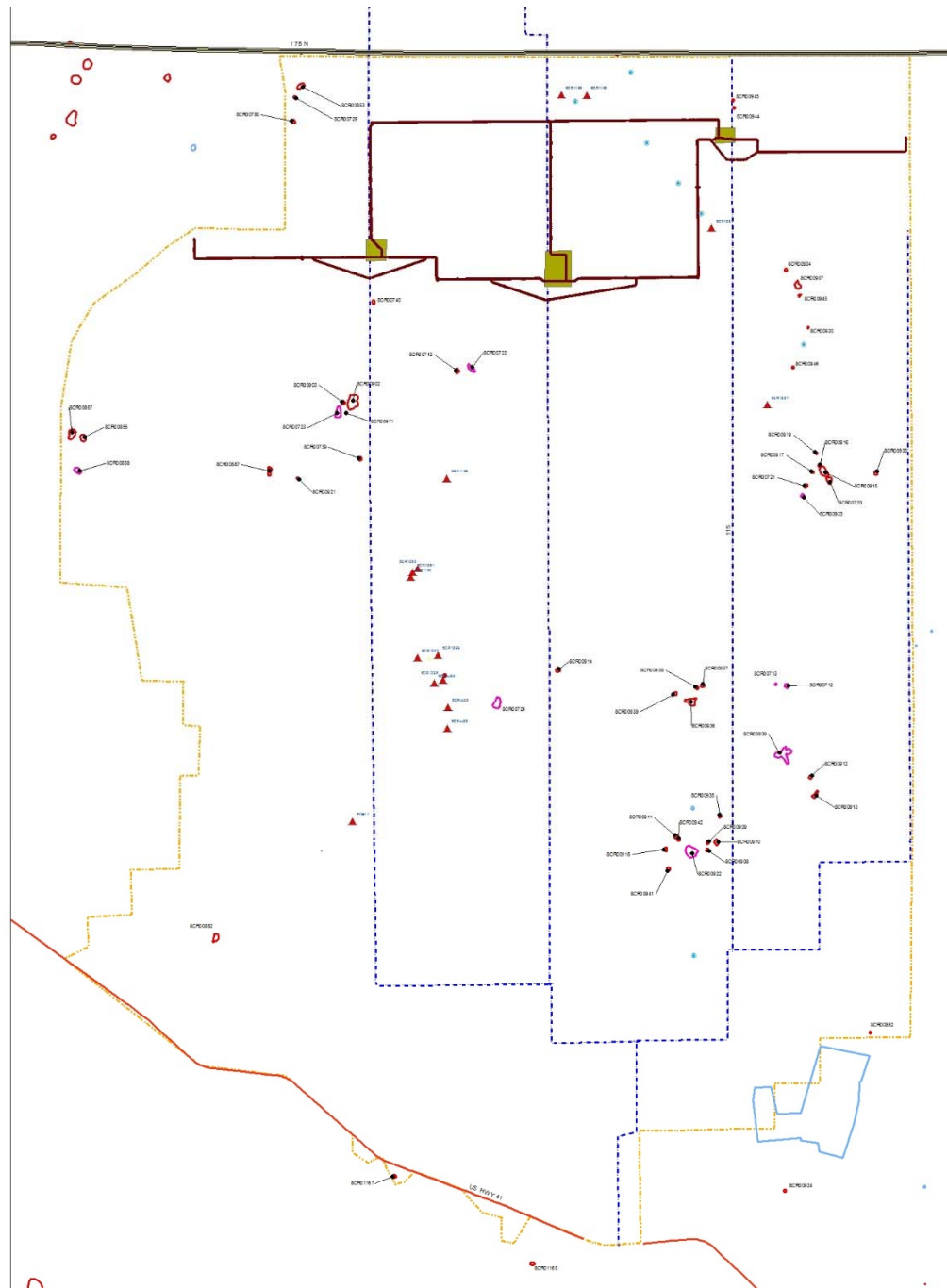
Picayune Strand Restoration Project Area

Archeological sites

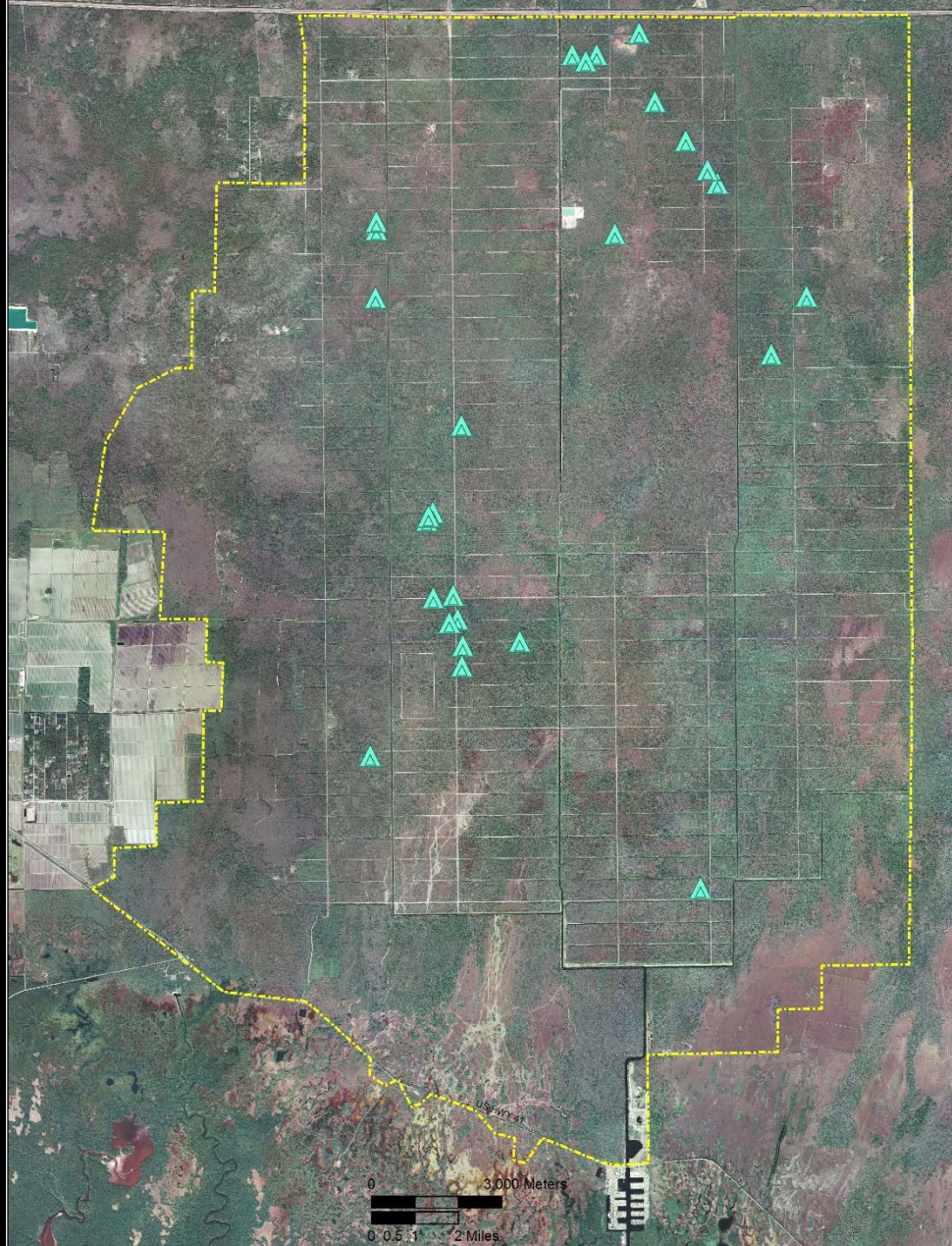
- Recorded to 2003



PSRP Archeological Sites Identified Prior to Construction



Picayune Strand Restoration Project Archeological Sites Identified During Construction

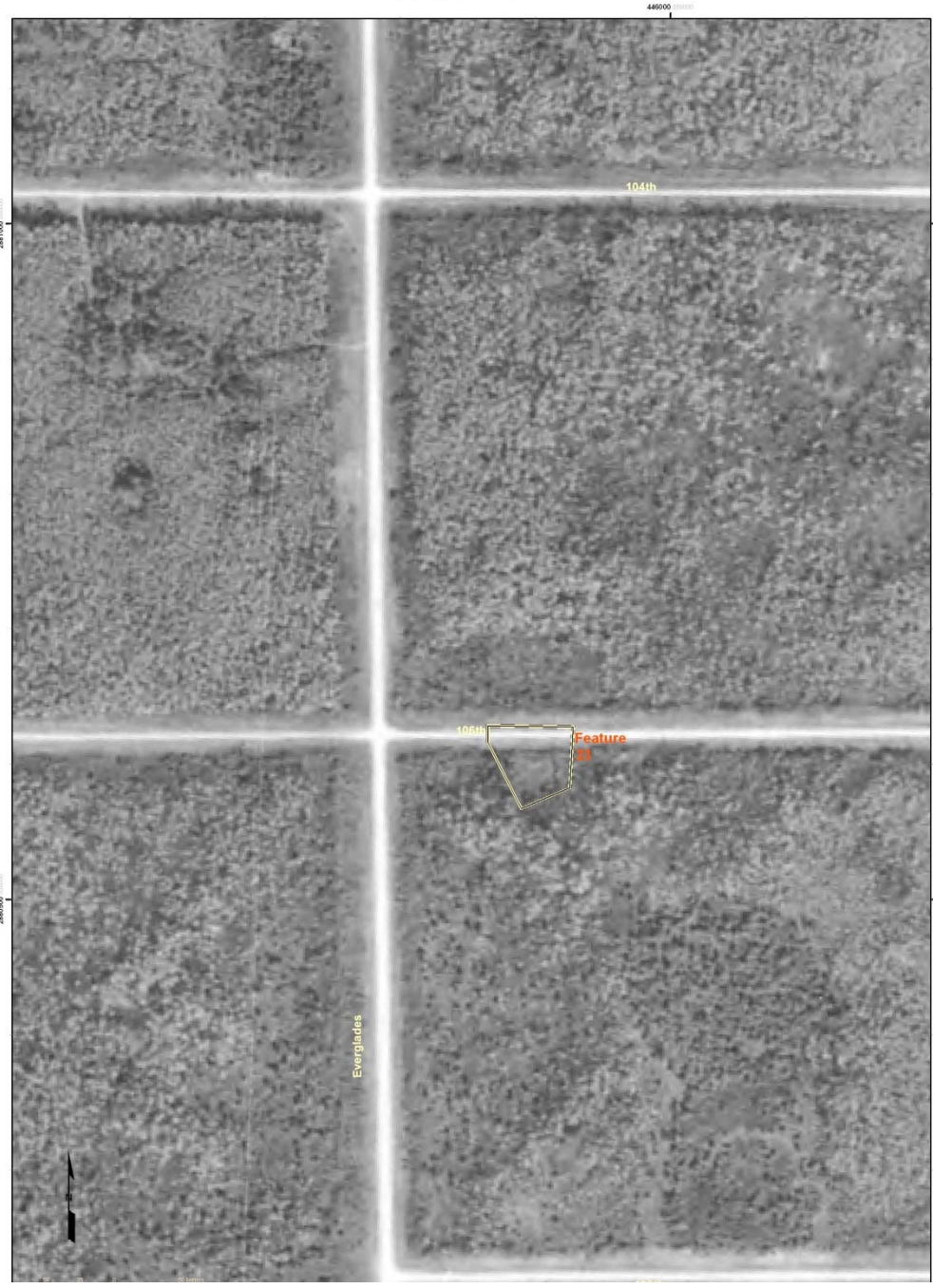


Monitoring Feature 23

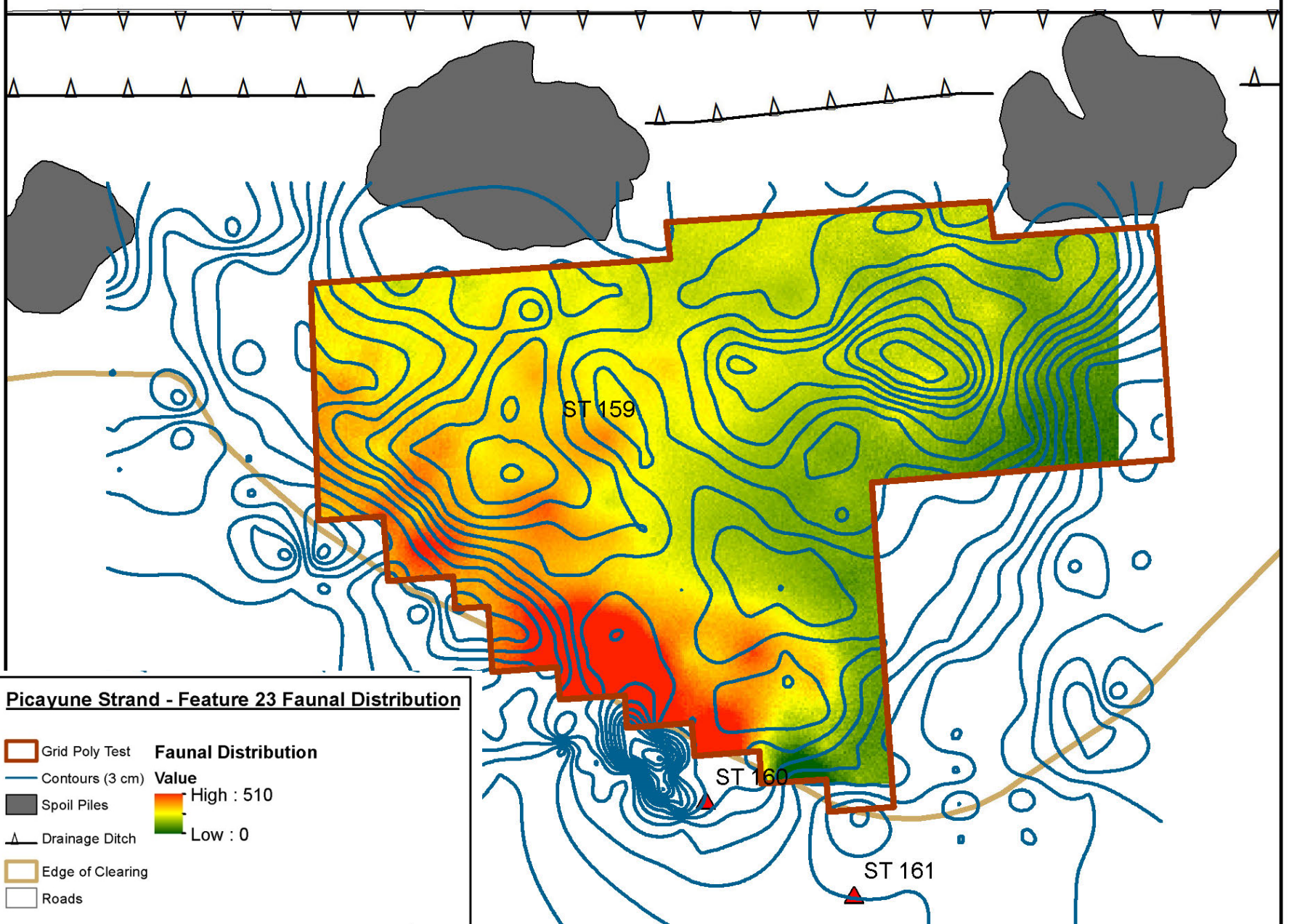




Picayune-Cultural Resource Monitoring Feature 23



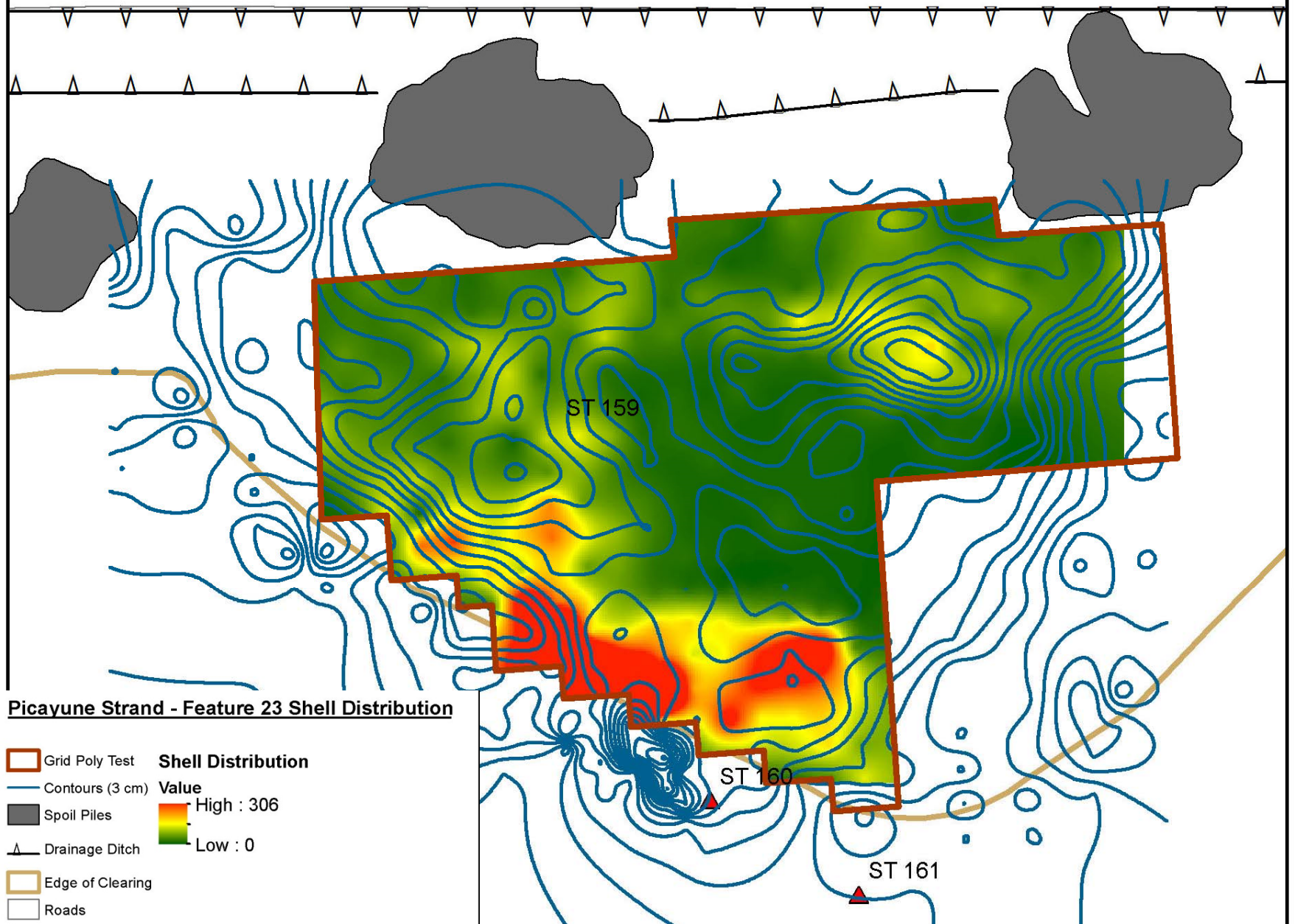
106TH AVE SE



Picayune Strand - Feature 23 Faunal Distribution

- Grid Poly Test
 - Contours (3 cm)
 - Spoil Piles
 - Drainage Ditch
 - Edge of Clearing
 - Roads
- Faunal Distribution Value**
High : 510
Low : 0

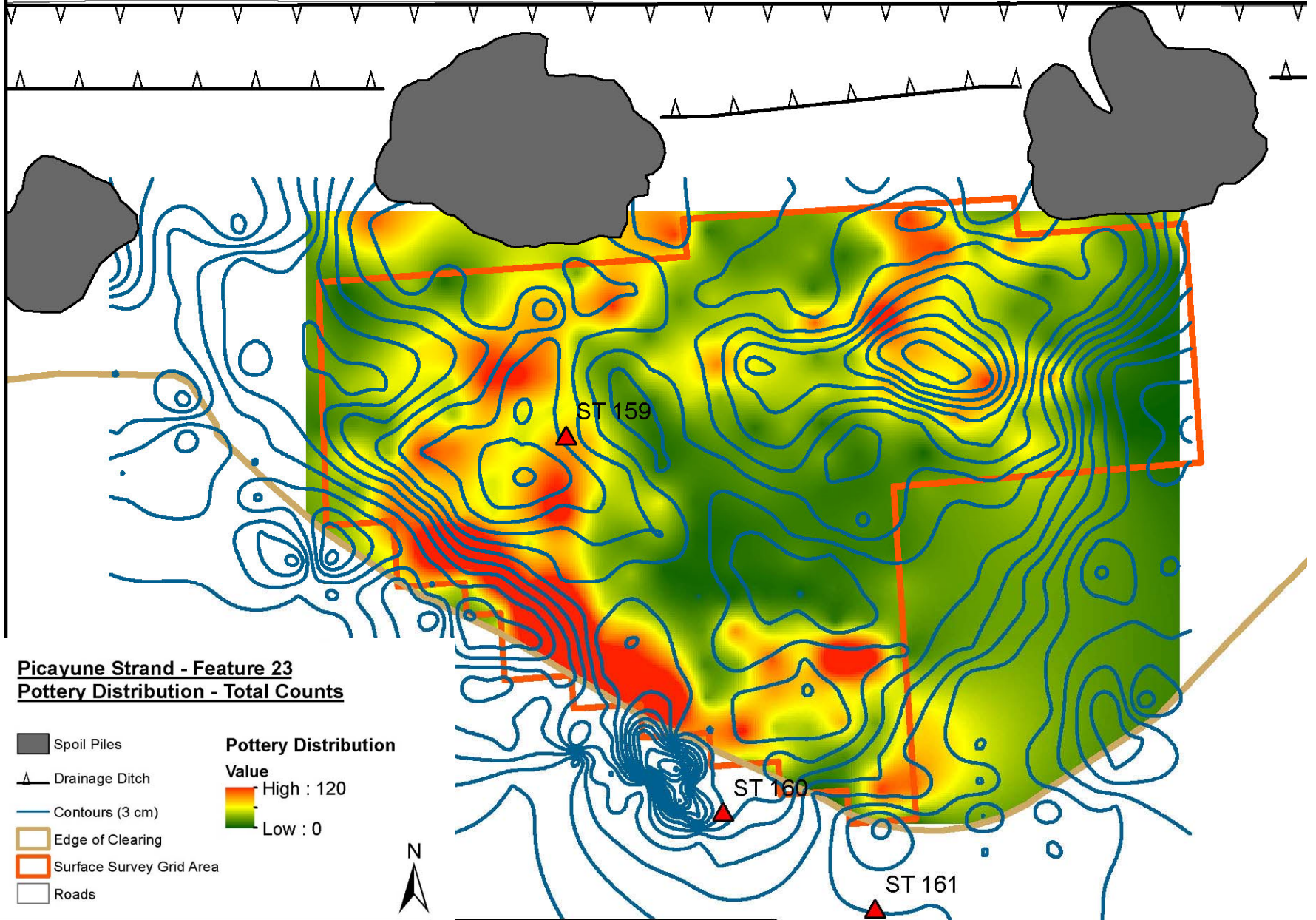
106TH AVE SE



Picayune Strand - Feature 23 Shell Distribution


- Grid Poly Test
 - Contours (3 cm)
 - Spoil Piles
 - Drainage Ditch
 - Edge of Clearing
 - Roads
- Shell Distribution Value**
- High : 306
 - Low : 0

106TH AVE SE

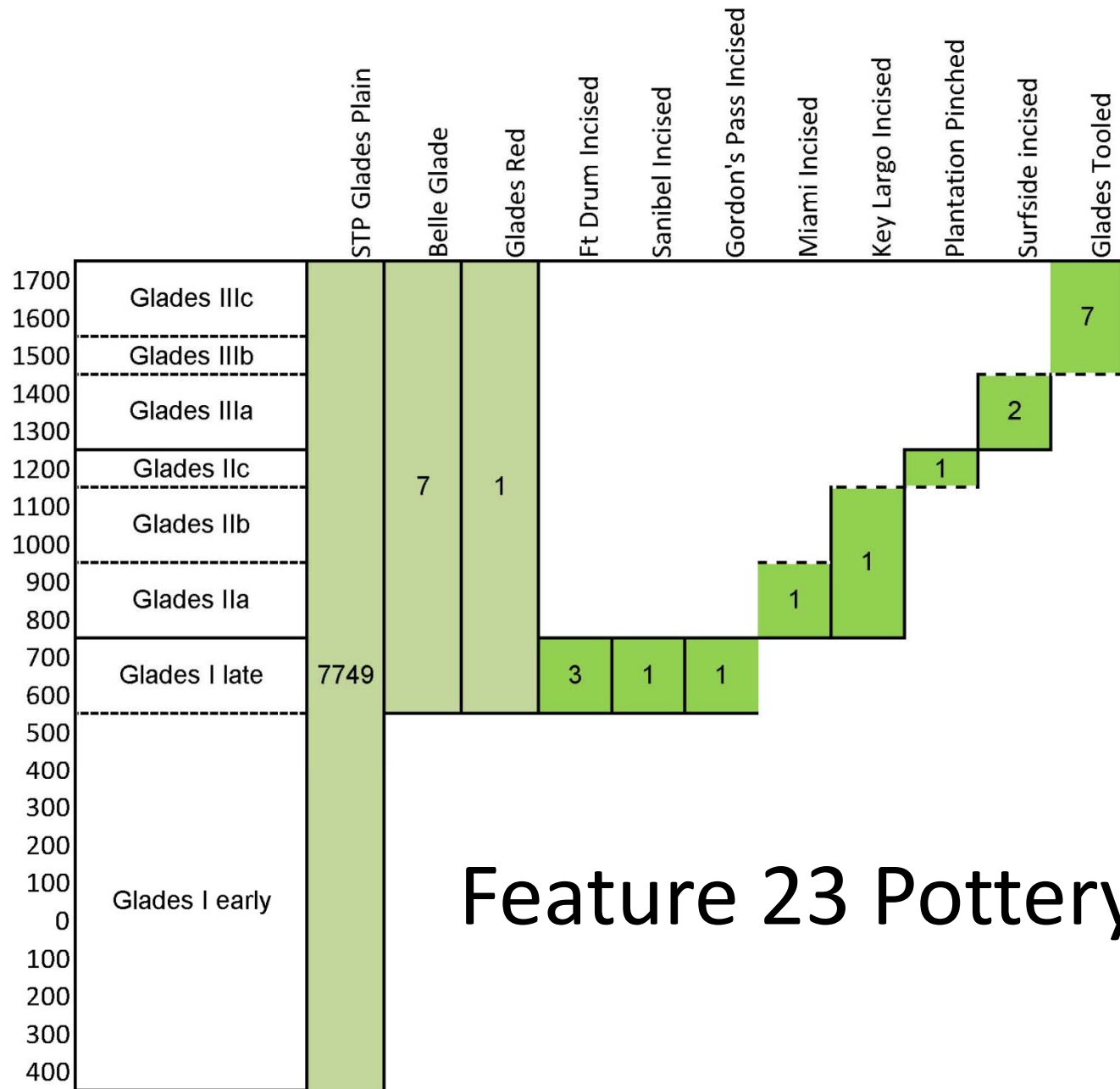


Picayune Strand - Feature 23
Pottery Distribution - Total Counts

-  Spoil Piles
-  Drainage Ditch
-  Contours (3 cm)
-  Edge of Clearing
-  Surface Survey Grid Area
-  Roads

Pottery Distribution
Value
 High : 120
Low : 0





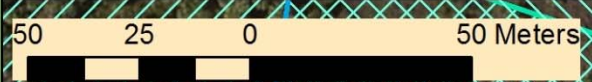
Feature 23 Pottery

PSRP Miller Pump Station Features 25 and 28

444200 000000

444300 000000

444400 000000



archeological site
Feature 28 (8CR1367)

Archeological site
Feature 25

Feature28

- ⊕ surface artifact
- positive shovel test
- ⊖ negative shovel test
- neg Datum

Feature25

survey results

- ⊙ Mound
- ⊖ Negative
- Positive
- ▲ Survey End
- ⊕ Wetland Rise

boundary types

- ▭ verified
- - - assumed
- ▭ 50mBuffer

2888800

2888800

2888700

2888700

2888600

2888600

444200 000000

444300 000000

444400 000000

- Wide variety of site types including sites with multiple mounds, medium to large general habitation sites, small low density sites, and special use sites.
- Date from the Late Archaic up to European contact (no evidence at this time of contact)
- Probably “dry” season occupation.
- With Angulate periwinkle possible indications of response to past sea level changes.
- Use LIDAR for predictive modeling

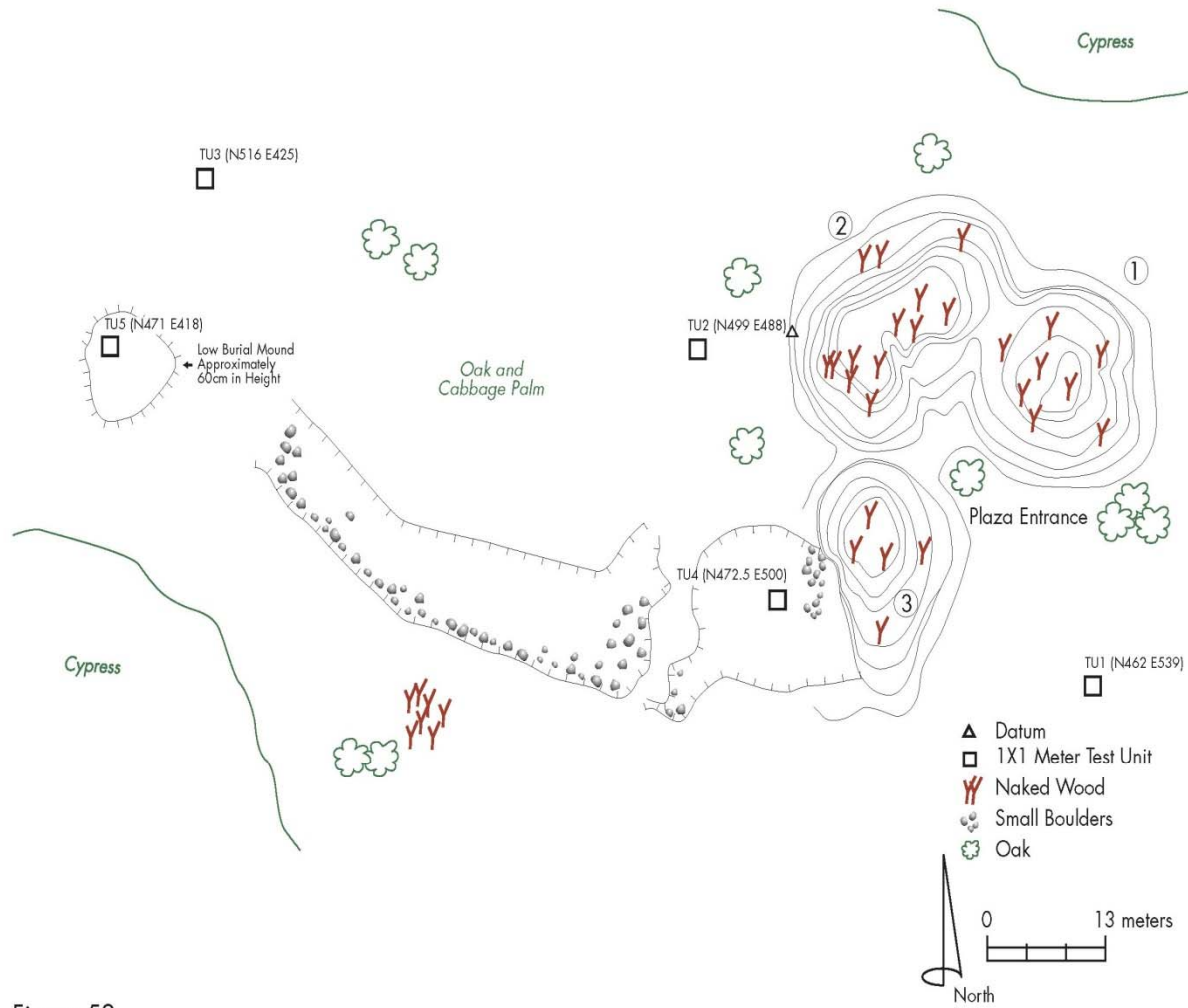


Figure 52
8CR922 Site Map

Gastropoda	<i>Euglandina rosea</i>	Rosy wolfsnail
	<i>Littorina scabra</i>	Angulate periwinkle
	<i>Melongena corona</i>	Florida crown conch
	Planorbidae	Sprite
	<i>Menetus alabamensis</i>	Marsh sprite
	<i>Lyogyrus latus</i>	Cobble sprite
	<i>Menetus floridensis</i>	Penny sprite
	<i>Busycon contrarium</i>	Lightning whelk
	Planorbidae	Ramshorn snail
	<i>Planorbella scalaris</i>	Mesa ramshorn
	<i>Pomacea</i> sp.	Florida applesnail
	Clypeasteroidea	Clypeasteridae
Malacostraca	Lithodidae	Stone crab